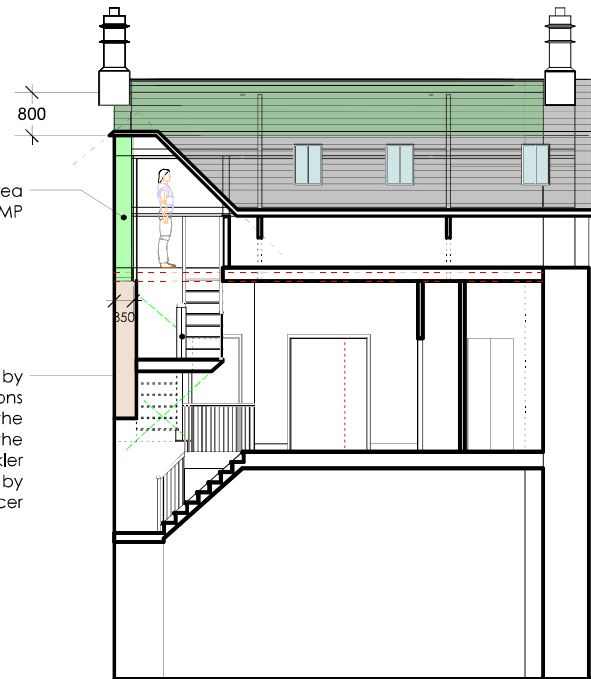




Rooflight Company conservation roof lights set flush with the tiles



Bat flight area as per BMP

Open stairs protected by Automist Fire Protection system will protect the historic fabric of the building unlike sprinkler systems as advised by Conservation Officer

11 BB Proposed Rear Elevation
1:100

12 DD Proposed Section through loft
1:100

NOTES Proposed timber stairs to comply with BS585 and with Part K of Building Regulations.

BMP - Biodiversity Mitigation Plan including within application

KEY

Proposed alterations

Scale Bar